

C-WIS - Constructor Warehouse Intelligence System

Visit www.constructor-storage.com/Products/Analysis-Tools/C-WIS-Warehouse-Int-Systems/ for the latest information.

The C-WIS Suite is a product in the category

Analysis & Simulation Tools

The Ideal Warehouse

Analysis assistance and consultancy

The C-WIS Suite

Please visit www.constructor-storage.com to see our other products.

Overview

Analysis & Simulation Tools › The C-WIS Suite

C-WIS is a software platform that helps stockholding companies to drive down costs, optimise processes and save time.

With C-WIS you can carry out various complex calculations which include a multiple ABC analysis. With insight of your stock flow it's possible to optimize the exact position of the different articles and capital binding vs. delivery accuracy, new working methods, choice of truck types, picking routines, storage methods etc.

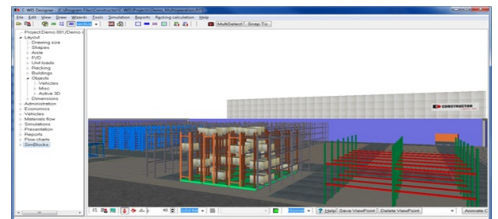
The suggested improvements from a C-WIS analysis can be as simple as amending stock locations or change you're buying patterns, which if done correctly can save both time and money.

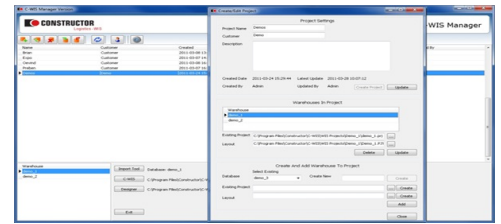
C-WIS helps you obtain sustainable warehouse operation by:

- Continuous monitoring of warehouse Key Performance Indicators
- Maintaining high performance in routines and workflow
- Maintaining an optimal stock level
- Warning of changes in article behaviour
- Delivering real data
- Identifying bottlenecks

References:

Axellus, Denmark
Basan, Germany
Danske Fragtmænd, Denmark
Diversey, Denmark
Ejendals, Finland
J.P Group, Denmark
Lindex, Sweden
Papyrus, Sweden





C-WIS Suite

The C-WIS software is developed by Constructor Logistics AB, a member of Constructor Group, and the C-WIS Suite includes:

Software:

- **C-WIS Essential**
The C-WIS Essential software is the core of the entire C-WIS Suite and can be installed individually and supplemented with additional C-WIS modules afterwards. This software is developed to run in a PC environment and uses MySQL to communicate with other database sources, which makes the software compatible with all existing WMS and ERP systems. C-WIS Essential works with real data combined with additional business information and based on this the C-WIS Essential generates reports and simulation of the traffic pattern and activities in the warehouse.



Modules:

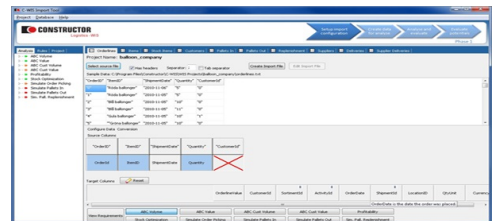
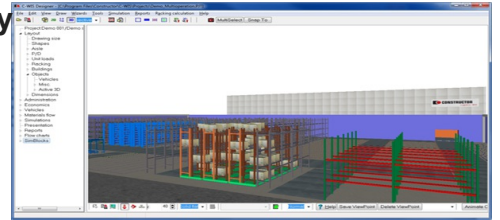
- **C-WIS Designer**
In the Designer Tool you create layouts and 2D/3D simulations for all kinds of equipment, financial data etc. You also set up the material flow and the way of working. This model of your existing or new warehouse can be operated with or without real data in order to find the optimal solution. The C-WIS Designer can be installed as standalone software, without any support of C-WIS Essential.
- **C-WIS Capital Optimisation**
Working Capital Optimisation can easily save 20% in working capital tied up in the warehouse and at the same time increase the service level. C-WIS goes in and analyses the current WMS or ERP data, with the needed service degree as the driving force the working capital can then be optimized. The suggested measure is then easily given for each of the products in the warehouse.
- **C-WIS Import Tool**
The Import Tool is the part of the application where you create parameters/settings for data import and transfer your data into C-WIS. The import can be done automatically (scheduled) or manually initiated.

Support

C-WIS is a simple to install software system that requires no costly upgrade or additional hardware investment. During the consultation and implementation phases your key staff will be trained on the functionality of C-WIS tools and the simplicity of operation.

Alternatively should you require our team to assist with this on a more long term basis this can be provided. As part of the licence agreement you will automatically receive any software upgrades.

Analysis & Simulation Tools > The C-WIS Suite



Parameter	Value
Project Name	Building Company
Project No.	0000000001
Project Date	2023-01-01
Project Location	Stockholm, Sweden
Project Status	Completed
Project Manager	John Doe
Project Engineer	Jane Smith
Project Designer	Mike Johnson
Project Architect	Sarah Brown
Project Contractor	ABC Construction
Project Client	XYZ Corporation
Project Budget	10,000,000 SEK
Project Start Date	2022-03-01
Project End Date	2023-01-31
Project Duration	10 months
Project Area	1500 sqm
Project Height	5 stories
Project Type	Office Building
Project Phase	Design
Project Risk	Low
Project Quality	High
Project Safety	Medium
Project Sustainability	Medium
Project Innovation	Low
Project Collaboration	High
Project Communication	High
Project Transparency	High
Project Accountability	High
Project Integrity	High
Project Honesty	High
Project Trust	High
Project Respect	High
Project Responsibility	High
Project Compassion	High
Project Kindness	High
Project Generosity	High
Project Gratitude	High
Project Humility	High
Project Patience	High
Project Gentleness	High
Project Self-control	High
Project Perseverance	High
Project Diligence	High
Project Industry	High
Project Initiative	High
Project Creativity	High
Project Innovation	High
Project Entrepreneurship	High
Project Leadership	High
Project Management	High
Project Organization	High
Project Planning	High
Project Execution	High
Project Monitoring	High
Project Evaluation	High
Project Improvement	High
Project Innovation	High
Project Creativity	High
Project Problem Solving	High
Project Decision Making	High
Project Communication	High
Project Collaboration	High
Project Teamwork	High
Project Accountability	High
Project Responsibility	High
Project Integrity	High
Project Honesty	High
Project Trust	High
Project Respect	High
Project Compassion	High
Project Kindness	High
Project Generosity	High
Project Gratitude	High
Project Humility	High
Project Patience	High
Project Gentleness	High
Project Self-control	High
Project Perseverance	High
Project Diligence	High
Project Industry	High
Project Initiative	High
Project Creativity	High
Project Innovation	High
Project Entrepreneurship	High
Project Leadership	High
Project Management	High
Project Organization	High
Project Planning	High
Project Execution	High
Project Monitoring	High
Project Evaluation	High
Project Improvement	High