

Reference:**Warehouse optimisation and analysis tool**

Constructor Scandinavia provides storage, archiving and logistic solutions for use in factories, warehouses, distribution centres, archives, offices, museums, libraries, medical institutions, retail outlets and numerous other applications.

Warehouse Intelligence System - C-WIS is a reference in the category

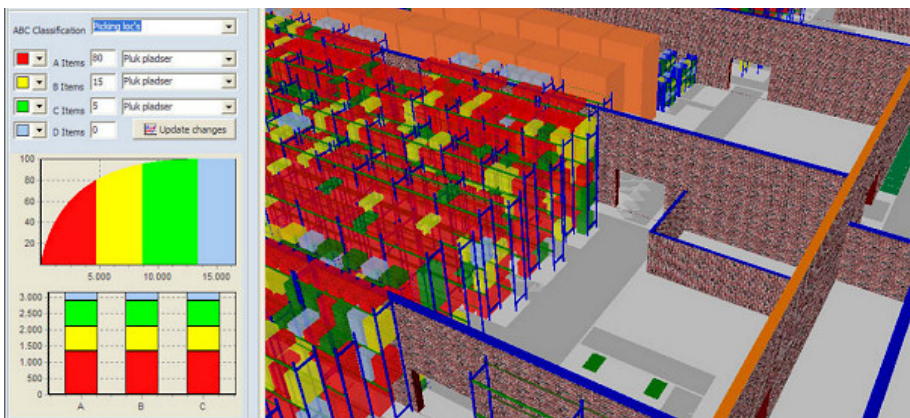
Our Solutions:

- Long Goods Handling
- Pallet Handling Solutions
- Retail Solutions
- Small Part Handling
- Special Product Solutions
- Storage and Work Areas
- Storage Machines and WMS

Warehouse Intelligence System - C-WIS

Warehouse Solutions

Please visit www.constructor-storage.com for more references.



C-WIS (Warehouse Intelligence System) is a sophisticated logistics optimization system for stock keeping companies. C-WIS is an analysis tool with the purpose for continuous obtaining, operational improvements.

C-WIS is the market's first and only warehouse intelligence system capable of using these vital metrics to categorise stock items in this way and improve efficiency. The suggested improvements can be as simple as amending stock locations or changing your buying patterns, which if done correctly can have significant benefits.

Please select your country to read more about our Storage Solutions:

- [Austria](#)
 - [Belgium](#)
 - [Czech Rep.](#)
 - [Denmark](#)
 - [France](#)
 - [Finland](#)
 - [Germany](#)
- [Hungary](#)
 - [Ireland](#)
 - [Luxembourg](#)
 - [Netherlands](#)
 - [Norway](#)
 - [Poland](#)
 - [Romania](#)
- [Russia](#)
 - [Slovakia](#)
 - [Sweden](#)
 - [Switzerland](#)
 - [United Kingdom](#)
 - [International Export \(English\)](#)